



### Dates for your diary

~ ~ ~

**Wed 13th September 9:00**

New School year Worship  
St Mary's Church

~ ~ ~

**Fri 22nd September 1:30**

**Year 1 / Year 2 / Reception**

Teddy Bear's Picnic  
St Mary's Church Garden

~ ~ ~

**Tue 26th September**

School Photographer

~ ~ ~

**Wed 27th September 9:00**

Harvest Worship  
St Mary's Church

~ ~ ~

**Fri 29th September 8:30**

Prayer Day - St Mary's Church

~ ~ ~

**HALF TERM 23/10 - 27/10**

**SCHOOL CLOSED**

~ ~ ~

**Thu 16th November PM**

Parents Evening

~ ~ ~

**INSET DAY Friday 17/11**

**SCHOOL CLOSED**

~ ~ ~

**END OF TERM 19/12 1PM**

### RESPECT

**Matthew 7:12**

*'So in everything, do to others what you would have them do to you.'*

**Respect**

**Peace**

**Love**

**Forgiveness**

**Responsibility**

**Faith**

# St Mary's Happy News!

News for our families and friends

[www.st-marys.lewisham.sch.uk](http://www.st-marys.lewisham.sch.uk)

Thursday 7th September 2023

Volume 64

## *"Personal Development at St Mary's is Outstanding" - Ofsted Dec 2021*

Dear Parents and Carers,

I hope that you have all enjoyed a wonderful summer break with your families. Our school staff are refreshed and have been working hard to prepare for a new school year.

It is lovely to see our children returning to school looking very smart in their new school uniform. They have calmly settled into their school day and have enjoyed sharing lots of exciting news about their summer break.

A warm **welcome** to our new Reception Class; to all children who are starting at St Mary's for the first time and also to our new Reception Class teacher, Miss Rebecca Burnett. I am really pleased that you are all joining our St Mary's school family and we look forward to working in partnership with you all.



At St Mary's our school team work incredibly hard to ensure that your children are nurtured, safe, educated and happy in school. We provide the best learning experiences and exciting opportunities for our children. Through our enriching curriculum, we continue to invest in high quality resources and personalise the children's learning to ensure that all of our children make good progress. I am pleased to announce that our 2023 school outcomes were positive and we are very proud of our children's achievements.

**RAAC:** The DfE has been helping education settings to identify and manage the potential risks of RAAC. I can confirm that St Mary's school do not have any confirmed RAAC in our buildings. However, in order to be absolutely certain, we are working with DfE to actively check whether RAAC has been used in the construction of any part of our buildings. If RAAC is identified, we will let you know straight away and put contingencies in place to ensure that the school building is safe.

Finally, I know how vital it is to work in partnership with parents in order for children to find school a positive and rewarding experience. I would like to thank you personally for your continued commitment and support towards the staff and pupils of St Mary's.

**Christine Graham, Headteacher**



Values-based Education  
VbE Quality Mark



THE CHURCH  
OF ENGLAND  
EDUCATION OFFICE

St Mary's is an Excellent School



### Parents Welcome Meetings

We hope that all parents can attend these important meetings to meet their new teacher and to hear about the exciting learning planned.

Nursery	Thursday 28th September 3:30PM
Reception	Thursday 28th September 3:00PM
Year 1	Wednesday 20th September 8:45AM
Year 2	Wednesday 20th September 8:45AM
Year 3	Wednesday 20th September 8:45AM
Year 4	Wednesday 20th September 8:45AM
Year 5	Thursday 21st September 3:15PM
Year 6	Thursday 21st September 5:00PM



### Trumpet Concert and Music Bursaries

Children in Years 4, 5 and 6 have been enjoying weekly trumpet lessons at St Mary's. The culmination of their music lessons was a wonderful concert. We are very proud that two of our students have been awarded a Bursary, in order for them to make even more progress in learning to play an instrument.



### Harvest

We will be launching our annual Harvest collection appeal next week and we will really appreciate your generous contributions of dried and tinned goods. All donations will support those in most need during these challenging times.



### Uniform Reminders

Please ensure that your child comes to school dressed correctly. Shoes should be plain black and PE kit should be a plain white t-shirt and plain navy/black jogging bottoms with plain black plimsols/trainers. Children should not wear any jewellery to school other than plain stud earrings. Hair should be a natural colour.

#### PE days

Children in Y1 and Y2 should come to school dressed in their PE Kit, older children come to school in uniform and change for PE:

Tuesday - Year 1 and Year 2

Thursday - Year 3 and Year 4

Friday - Year 5 and Year 6



### Punctuality

Thank you to the vast majority of parents who have been on time at the beginning (8:40) and end of the day (3:10). If you are late for school in the morning, you will need to sign in using the electronic screen in the school lobby. Late charges of £5 per 15 minutes apply for any child not collected by 3:30. [Late charges from Enrichment Club apply from 5:45 and are £10 per 5 minutes.](#)

#### We are here to help!

If you have any concerns related to your family's wellbeing, finances or practical issues, please get in touch by emailing the school at: [admin@st-marys.lewisham.sch.uk](mailto:admin@st-marys.lewisham.sch.uk) or by ringing the school on **0208 6902613**.

### Homework

Please note that (apart from Maths personalised learning sheets), all homework will be delivered online. Please speak to the school if you require any support with devices or Internet access.

### School Fund

Thank you to all the parents who have already paid this vital funding, which we rely on to maintain the school premises. Please pay via ParentPay - £30 for the year or £10 a term. Sibling discounts are available.

## INFORMATION FOR PARENTS

Please see our website for [WHERE TO FIND HELP WITH FOODBANKS, HOLIDAY MEALS, COST OF LIVING AND FAMILY SUPPORT](#). There are more links to a range of support on the back page of this newsletter. Please speak to a member of staff if you require any additional support.

[CLICK HERE FOR LOTS OF FAMILY ACTIVITIES TO ENJOY IN LEWISHAM.](#)

### Being a Parent

## Fridays at 9AM starting 6th October

**Creche will be provided for younger children.  
The 8 week course is free and highly recommended.  
All participants will receive a certificate.**

The course helps parents and carers learn practical communication skills for everyday life and bring up confident and happy children. It helps improve parents' wellbeing and parenting techniques, builds families' social and community connectedness.

Places are limited per term. It is first come first serve basis and you will automatically be put in a waiting list once the list is full.

For information and registration, please contact:



**Family Information Service**  
Email: [fis@lewisham.gov.uk](mailto:fis@lewisham.gov.uk)  
Telephone: 020 8314 3940  
Mobile: 073 9286 2138



**EMPOWERING  
PARENTS  
EMPOWERING  
COMMUNITIES**

### Free School Meal Vouchers

We have continued to provide food vouchers to cover the school holidays for all pupils who are entitled to a free school meal. I am conscious that some families may not know whether they are entitled to free school meals so we are encouraging all of our families to apply by following this link:

<https://lewisham.gov.uk/myservices/education/student-pupil-support/free-school-meals-and-extra-support-for-your-child>

### Our Vision

**To be a learning community that promotes the unique gifts, wellbeing and potential of every person. Our work is founded on the life and teaching of Jesus Christ, building on His message of equality, peace and justice, guided by His words 'As I have loved you, so you must love one another' (John 13:34).**





## SPORTS DAY

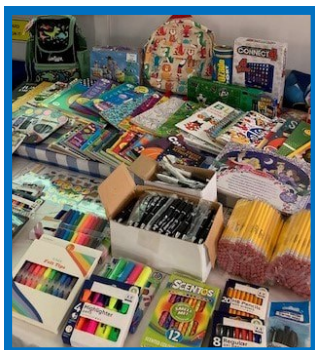
Health week culminated in our annual Sports Day, a fantastic event held at Ladywell Arena athletics track. The children were thrilled to compete at this specialist athletics arena and to race on the running track. They competed in their teams, completing seven athletic challenges and a sprint race.

It was also wonderful to welcome our parents to cheer their children on and take part in a tug of war and parent's races. Congratulations to our winning teams, in KS1 the champions were the YELLOW team and in KS2 the RED team, both winning with record scores!



### Rainbow Club

The School Council organised a collection during Refugee Week. These were small items such as colouring pencils, activity books and small games to donate to Rainbow Club, a Saturday school attended by refugees and funded by AFRIL. A big thank you to all who donated.



### Gymnastics

This well-attended before school club has seen the children make rapid progress in developing their gymnastic skills using a range of apparatus.



### Farewell to Year 6

A very special worship to say a special farewell to our amazing Year 6 class was held in St Mary's Church at the end of the school year in July. The worship was led by Father Steve and Father Max and attended by parents, clergy and governors. Many thanks to Mr Stringfellow for coordinating the music. The service provided an opportunity to appreciate our amazing Year 6 class and all they have achieved at St Mary's, as well as wishing them well for the future. Each child received a Bible as a gift before enjoying photos on the Church steps.



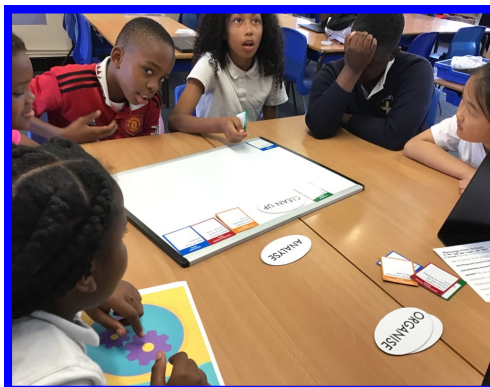
### Peter Pan

Our Year 6 class performed a wonderful adaptation of Peter Pan which was enjoyed by all of the children and our parents at a special evening performance.



### Aspiration Week

We want our children to know that there is nothing that they can't achieve. We welcomed a wide variety of visitors during this special week, from a variety of careers. Each guest inspired the children by sharing their journey to achieve their dreams, talking about their perseverance and how they overcame challenges. Careers included a midwife, professor, author, gymnast, BSL interpreter, cupcake decorator, children's charity worker, data analyst, policeman and karate teacher.



**ST MARY'S LEWISHAM  
C of E PRIMARY SCHOOL**

329 Lewisham High  
Street, SE13 6NX

Phone: 020 8690 2613  
E-mail: [admin@st-marys.lewisham.sch.uk](mailto:admin@st-marys.lewisham.sch.uk)

Friends of St Mary's  
email address:  
[fosm@st-marys.lewisham.sch.uk](mailto:fosm@st-marys.lewisham.sch.uk)

**Parents news**

We welcome all parents to join the Friends of St Mary's (FOSM) and support the school with fundraising events and other ways to improve the school for our children. Email at the above address or speak to a member of staff to find out more!



**HELP AND SUPPORT FOR PARENTS AND CARERS**

**Where to find help - CLICK HERE**

Please visit a new section of our school website, which contains information and advice for all of our families:

- **Support with Domestic Abuse** - posters in several languages
- **Cost of Living Crisis** - we know that everyone is feeling the effects of the crisis, and we want to support our families that are most affected
- **Local Authority support** - help available from Lewisham Council
- **Help with feeding your family** - details of local food banks
- **Worrying about money** - advice and guidance including hardship funds
- **A warm welcome** - local spaces offering a warm and welcoming environment
- **Local organisations that support families** - directory of local services

**Mental health and Wellbeing**

Please can we ask you to keep the school up to date with any concerns you have regarding your children's mental health and wellbeing. Here are some links to places where families can find additional support:

- [Loneliness and Re-connection](#) - information and a toolkit for parents
- [Mental Health Resources](#) - links to many resources for children & parents
- [Every mind matters](#) - mental health advice from the NHS
- [Government guidance for parents and carers](#) - support with Covid-19
- [Childhood Bereavement Network](#) - support for children who have experienced the death of someone important to them

**E - Safety**

Please continue to be aware of what your child is doing online. Support for parents and carers to keep their children safe online includes:

- [National Online Safety](#) - register your St Mary's account
- [Internet matters](#) - support to keep children safe online
- [Thinkuknow](#) - advice from the National Crime Agency to stay safe online
- [UK Safer Internet Centre](#) - advice for parents and carers from the NSPCC
- [Kiddle](#) and [KidRex](#) - child friendly search engines

**TERM DATES**

**Autumn Term 2023**

**Wednesday 6th September - Friday 20th October**

**HALF TERM - Monday 23rd October - Friday 27th October**

**Monday 30th October - Tuesday 19th December**

**INSET - SCHOOL CLOSED - Friday 17th November**

**INSET - SCHOOL CLOSED - Wednesday 20th December**

**CHRISTMAS HOLIDAY - Thursday 21st December - Friday 5th January**

**Spring Term 2023**

**Tuesday 9th January - Friday 12th February**

**INSET - SCHOOL CLOSED - Monday 8th January**

**HALF TERM - Monday 12th February - Friday 16th February**